

Art Museum of Southeast Texas

500 Main

Fall 2020

CURRENT EXHIBITION

FROM THE VAULT: *Tyler Museum of Art*

October 3, 2020 - February 28, 2021

Drive-Thru Family Arts Day, Saturday, February 20, 2021 | 10 a.m. - 2 p.m.

From the Vault: Tyler Museum of Art features a selection of early Texas paintings and works on paper from the permanent collection of the Tyler Museum of Art (TMA), with a spotlight on early Texas artist and educator Coreen Mary Spellman (1905-1978). Of particular interest to this exhibition are Spellman's advances in printmaking techniques and her originality. *From the Vault* also includes a notable selection of female artists whose work, until recently, has largely been omitted from the history books. The Tyler Museum of Art is credited with collecting works by Cecilia Steinfeldt, Rosalie Speed, Lucie Harris Locke, and Clyde Connell. Numerous artists included in this exhibition are widely exhibited, collected and studied, such as Jerry Bywaters and William Lester, who were

members of the "Dallas Nine" group. Other widely exhibited and notable artists included are David Adickes, Kelly Fearing, Joseph Glasco, Ancel Nunn, and Valton Tyler.

From the Vault is an exhibition series which enhances the relationship between AMSET and TMA. The exhibition is partially funded by a Texas Commission on the Arts and the National Endowment for the Arts grants. *From the Vault: Art Museum of Southeast Texas* is currently on view at the Tyler Museum of Art from September 13-November 29 and features contemporary Texas paintings and works on paper from AMSET's permanent collection.



Rosalie Speed, *Old Man River, Vicksburg*, c.1938, oil on Masonite, 25¼ x 28½ in. Tyler Museum of Art, 2005.06, Gift of the 2005 Collectors' Circle

To find out more about how National Endowment for the Arts grants impact individuals and communities, visit www.arts.gov.

This exhibition is generously funded in part by an award from the Texas Commission on the Arts and the National Endowment for the Arts, the City of Beaumont, the Wesley W. Washburn, M.D. and Lulu L. Smith, M.D. Endowment Fund, the C. Homer and Edith Fuller Chambers Charitable Foundation, and the members of the Art Museum of Southeast Texas. Special thanks to the Tyler Museum of Art.

AMSET PERSPECTIVES

October 3, 2020 - February 28, 2021

Drive-Thru Family Arts Day, Saturday, February 20, 2021 | 10 a.m. - 2 p.m.



Christopher Troutman, *Two Downtowns: SE TX and S. Kyushu*, 2017, oil paint on unstretched canvas, 64 x 51 in., Museum purchase, PC 2019.10

Perspectives: *Recent Acquisitions & Selections from the Permanent Collection* features a selection of recent acquisitions to the permanent collection, as well as a spotlight on works from the John Gaston Fairey collection of Mexican Folk Art. Over the years, AMSET's permanent collection has

This exhibition is generously funded in part by LeeAnn & Terry Garth, Stan Price, an award from the Texas Commission on the Arts and the National Endowment for the Arts, the City of Beaumont, the Wesley W. Washburn, M.D. and Lulu L. Smith, M.D. Endowment Fund, the C. Homer and Edith Fuller Chambers Charitable Foundation, and the members of the Art Museum of Southeast Texas.

grown from 200 to nearly 2,000 objects, with a focus on collecting contemporary Texas artists and regional folk art. Each year, we proudly present an exhibition of works solely from the permanent collection, giving Southeast Texas audiences the opportunity to see the works that are now a part of their museum.

A yearly focus exhibition on the permanent collection is made possible through the generous donations of our museum patrons, collectors and artists. It is through your support that we are able to fulfill our institutional mission and to provide education, inspiration and creative vision throughout Southeast Texas through our unique collections, exhibitions and public programs.

Conn Gallery

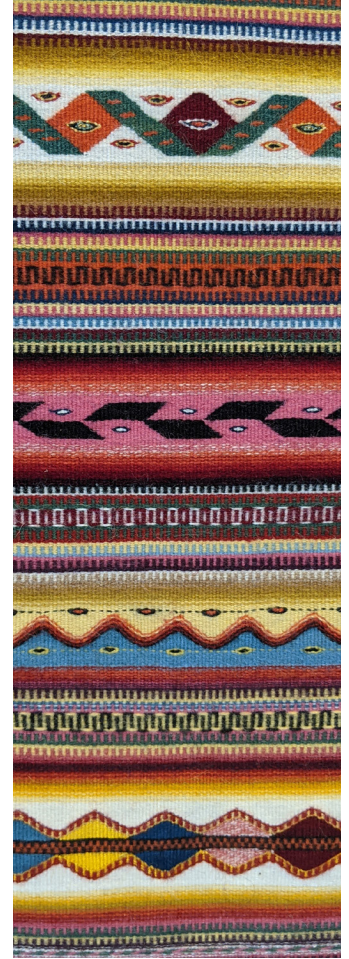
OVER, UNDER AND THROUGH: MEXICAN WEAVING

On view through February 2021

The Conn Gallery currently features a selection woven textiles including rugs, belts and sashes, on loan from the estate of John Gaston Fairey. This exhibition, designed for children and their families, explores two different kinds of weaving found in Mexico. Examples for weaving from the back strap loom and the foot pedal loom are on view, as well as an actual physical example of each type of loom. Visitors are encouraged to pick up a hands-on art activity packet that goes with the exhibit at the front desk. The packet includes materials and

instructions for weaving a friendship bracelet, which is a derivative of back strap weaving shown in the gallery. Funding for this exhibition is generously provided by the C. Homer and Edith Fuller Chambers Charitable Trust, the Texas Commission on the Arts and the National Endowment for the Arts, the City of Beaumont and members of the Art Museum of Southeast Texas.

Maria Luisa Vasquez de Mendoza,
Multi-Colored Striped Rug (detail)



CHANGES IN Curatorial

AMSET has had some new developments in the curatorial department. Sadly, Mariah Rockefeller has resigned from her position of curator of exhibitions and collections at the art museum. We were sorry to see her go, but wish her all the best. With her resignation, we have also made some internal structural staffing changes. We have promoted a very talented and capable Caitlin Clay, from registrar to curator of exhibitions. Caitlin is an excellent writer

and researcher, a 2018 Masters graduate from Texas Christian University with a degree in art history, specializing in modern and contemporary art. We are fortunate to have her already living here in Beaumont. We have eliminated the registrar position and have hired a curator of collections, Dario Bucheli. Dario is originally from Monterrey, Mexico, and just graduated from Texas Christian University this spring with a Masters degree in fine art. While in

school, he worked in TCU's library art collection and has since worked for an art transportation and art conservation company.

Cajun Roots

This fall, AMSET is proud to display a selection of landscapes and seascapes from the permanent collection in the West Hall. The mini-exhibition was curated by Mariah Rockefeller and includes nine paintings and works on paper by artists such as John Hanna, Wolf Kahn, Frank Reaugh and Betty Mobley.

The exhibition was organized to compliment the most recent loan to the museum, *Evangeline Oak at Dawn* by George Rodrigue (1944-2013).

Born and raised in New Iberia, Louisiana, Rodrigue is most well-known for his Blue Dog Series, based on the French-Cajun loup-garou legend of the Cajun werewolf dog. Rodrigue's painting, *Evangeline Oak at*

Dawn (dated 1972 and on loan to AMSET till 2021) is a moody, dark landscape that evokes the mystery and majesty of Louisiana's bayous during the early morning hours. Over the course of his career, Rodrigue often painted the wide, ancient oak tree as a symbol of his beloved Louisiana. Wendy Rodrigue Magnus, George's widow, writes in her article "Early Oak Trees and a Regrettable Self-Portrait", that "[George] never painted an oak tree from a photograph in his life – nor has he ever painted one particular tree". George never intended to paint specific trees because the oak tree was a symbol for him – a symbol of bygone years, of unspoken secrets, of the wondrous

and mysterious Louisiana wetlands. We may never be able to pinpoint an exact tree that George was painting, but the title of this canvas, *Evangeline Oak at Dawn*, reveals Rodrigue's fascination with Cajun myth and legend. "Evangeline Oak at Dawn" is a literary reference to Henry Wadsworth

'Acadiana' is the official name of the French Louisiana region that became home to these men and women. In fact, the word "Cajun" comes from the pronunciation of the French word "acadians" (pronounced a-kay-juns). In her article "A History of Evangeline in Rodrigue Paintings", Wendy



George Rodrigue, *Evangeline Oak at Dawn*, 1972, oil on canvas, 26.7 x 36.5, On loan from the family of the late Marcia and Dr. Frank Giglio

Rodrigue Manus writes that the tragic legend inspired many artists and Louisiana citizens, so much so that the towns of New Iberia and St. Martinville "disputed the location of the 'Evangeline Oak', purportedly the place where [Evangeline] wept and 'stood like one entranced'". In 1920, both cities claimed the landmark tree being located in their respective boundaries.

Longfellow's poem, [Evangeline: A Tale of Arcadia](#) (1847). The poem focuses on the fictitious and tragic love story of Evangeline Bellefontaine and Gabriel Lajeunesse, who lived in Acadian Nova Scotia and were betrothed. The couple is separated when the British invade Nova Scotia in the Expulsion of the Acadians. Evangeline spends her life searching for Gabriel throughout the United States, finally locating him in Philadelphia on his death bed. Part of Evangeline's search led her through the swamps and oak trees of Louisiana, a fictitious account that mirrors reality. In the early 1800's, nearly 4,000 Acadians arrived from Canada and Nova Scotia to settle in Louisiana.

George Rodrigue was so intrigued by Evangeline's story that he created hundreds of paintings depicting Evangeline amongst the Louisiana oak trees. Though Evangeline is not physically depicted in this painting, the viewer takes her place. When you stand in front of the painting, you become Evangeline, filled with haunting loneliness and expectation, hoping that the morning light will reveal your beloved beneath the weighty branches of the oak tree.

RECENT ACQUISITIONS

AMSET is pleased to announce seven recent additions to the permanent collection. Geoff Winningham donated six of his photographs, Rob Clark and Jerry Thacker donated a mixed media collage by Houston-based artist Patrick Turk. Continue reading to learn more about AMSET's exciting new acquisitions.

GEOFF WINNINGHAM

Geoff Winningham (b. 1943) is an American photographer, journalist, and filmmaker best known for his photographs and documentary films focusing on Texas and Mexican culture. Geoff also works as the Lynette S. Autrey Chair in the Humanities and the Professor of Photography at Rice University.

In 2003, Geoff saw for the first time both the southern coast of Veracruz and the Texas Coast near High Island. He was amazed by the striking differences in the landscapes and decided these locations would be the beginning and end points of a photographic study that would engage the two countries he has lived in for over twenty years, the United States and Mexico. After seven years and over two hundred trips, Geoff published the photobook Traveling the Shore of the Spanish Sea: The Gulf Coast of Texas & Mexico in 2010. The book begins east of High Island in Port Arthur, and ends twelve hundred miles down the coast at the end of an old stone road in tropical terrain of almost indescribable beauty, overlooking the sea. The image pictured is one of the photographs donated to AMSET, as well as an image from the Traveling the Shore of the Spanish Sea photobook. In the

image, Geoff has photographed a man named Don Pio, who owns and operates a mini-zoological museum in Tlacotalpan, Veracruz. Geoff writes that while visiting



Geoff Winningham, *El Mini-Zoológico Museo de Don Pio, Tlacotalpan, Veracruz*, 2005, color coupler photograph from a film negative, 20 x 24 in., Photograph by Geoff Winningham. Gift of the artist. PC 2020.03.04.

the town of Tlacotalpan, he came across an old house with a sign above it reading "Aquí es el Mini-Zoológico Museo de Don Pio. Cocodrilos enormes. Aves exótico. Tortugas. Y mucho mas." Intrigued by the advertisement of enormous crocodiles, exotic birds, turtles and more, Geoff entered the building, where he met Don Pio, owner, collector, and curator of extraordinary (and some not so extraordinary) objects and creatures. Geoff writes that he saw

rooms full of objects, from an eighteenth-century bull castrator to a jawbone of a crocodile, to woven cane lobster traps from Alvarado. "Don Pio does not have a cabinet of curiosities – he has a house and yard full of them (something I think we can all attest to when we think of our own collections)."

The donated photographs also include images of food carts, market vendors, and rural signage. Four of the six photographs Geoff donated to AMSET are from the Traveling the Shore of the Spanish Sea book. All six photographs are currently on view in the Main Galleries in the exhibition, *Perspectives: Recent Acquisitions and Selections from the Permanent Collection* (October 3, 2020 – February 28, 2021). Come by the museum and see Geoff's photographs in-person! Interested in Geoff's current projects? Check out the links

below:

Geoff is currently working on a photobook about the Mexican festival Dia de los Muertos – the Day of the Dead. The book will hopefully be published in the next year. On October 9, 2020, Geoff gave a virtual Zoom presentation about his trips to Mexico to document the festival and how he became interested in documenting regional variances of celebrating the day.

Check out AMSET's social media platforms or website to view Geoff's entire presentation at <https://www.facebook.com/AMSETx> or www.amset.org.

You can also view Geoff's current and past work at his website: <https://www.geoffwinningham.com/>.

Love the images from Traveling the Shore of the Spanish Sea? You can purchase the book here: <https://www.amazon.com/Traveling-Shore-Spanish-Sea-Photography/dp/1603441611>

PATRICK TURK

Patrick Turk (b. 1976) is a Houston-based, self-taught artist who was recently featured in a solo exhibition at AMSET. His assemblages have been exhibited throughout Houston galleries including Art Storm, Lawndale Art Center and Rudolph/Projects/Art Scan, as well as galleries in Galveston, Texas, and Los Angeles, California. In 2013, he was an Artist in Residence at the Lawndale Art Center. His works have been published several times in Mung, Being Magazine and include high profile commissions for the 2009 Houston Art Car Parade Poster, as well as the Philokalia album cover by Golden Cities. Quasi-scientist, Patrick Turk explores the mysteries of the universe in his highly detailed and imaginative hand-cut paper assemblages. Patrick is interested in traditional histories and ancient mythologies as viewed through a psychedelic lens. By combining historical illustrations with concepts from science fiction such as time travel, sentient planets, and hypothetical biology, he creates kaleidoscopic depictions of religious, mythological, and mystical allegories. He often utilizes

images from science-fiction novels, encyclopedias, history, and scientific diagrams for his collages. Patrick's exhibition, *Higher Planes*, was on display from March 14, 2020 to September 13, 2020 in AMSET's main galleries. *Higher Planes* featured an immersive site-specific installation, as well as hand-cut paper assemblages, such as *Dust* (pictured). The exhibition included 16 different artworks and was sourced from fourteen collectors, including local art collectors Rob Clark and Jerry Thacker. Rob and Jerry graciously donated *Dust* to AMSET at the end of Patrick's exhibition. We are grateful for such an incredible artwork to join the permanent collection!



Patrick Turk, *Dust*, 2016, hand-cut paper and mixed media on panel, 35 x 30 x 8 in., Gift of Rob Clark and Jerry Thacker, PC 2020.04

Missed out on having an opportunity to see Patrick's exhibition at AMSET? Check out some of the virtual programming for the show that is still available.

Patrick Turk: Higher Planes Gallery Guide:
<https://www.amset.org/Gallery-Guides>

Patrick Turk Lightning Round Q&A with Mariah Rockefeller: <https://www.facebook.com/AMSETx/posts/10157036101246481>

Patrick Turk Virtual Artist Talk with Mariah Rockefeller and writer Erik Davis: <https://www.facebook.com/AMSETx/videos/339680017435379>

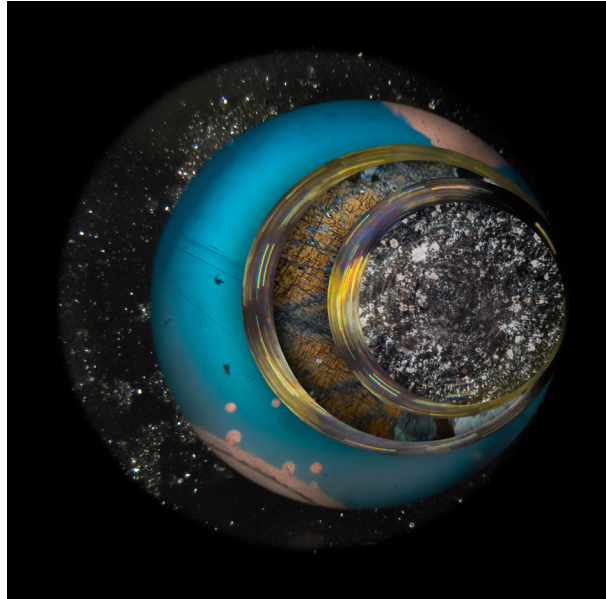
Want to learn more about Patrick Turk's most recent projects? Check out the link to Cris Worley Fine Arts Gallery: <https://www.crisworley.com/artists/patrick-turk>

CAFÉ ARTS SERIES

FOR LOCAL ARTISTS

BRANDI HAMILTON: No Solid Surface

July 2 - November 15, 2020



Tangential, 2018, C-Print, edition of 15, 12 x 12 inches,
image courtesy of the artist

Please join us for the Artist's Reception:
Thursday, November 5th 4:30 - 6:30 p.m.

GAYLE PUGH: Diversity of Texas

November 19, 2020 - February 14, 2021

ARTIST RECEPTION

February 4, 2021
5:30 - 7:30 p.m.



The Art Museum of Southeast Texas is excited to present an exhibition of Texas landscapes by local artist Gayle Pugh this fall and winter. From wooded forests with babbling creeks, to rocky desert scenes, Gayle creates colorful and highly detailed paintings of Texas' diverse landscapes. Gayle owns and works at Buna Medical Clinic, located in Buna, Texas. She previously studied Family Medicine at the US Army Physician Assistant program. Gayle has participated in local shows, including exhibitions at Art League Beaumont. This is her first solo exhibition.

AMSET is bringing back First Thursdays with Jazz! This month, First Thursday will be in conjunction with Café Artist Brandi Hamilton's reception. Light refreshments will be available. This Thursday

evening, the museum will be open until 6:30 p.m., providing live jazz entertainment with seating available both inside and outside for people to safely enjoy the evening.

Sponsored by Goodyear Beaumont Chemical, Bessie Chisum/Chisum Resources Management, and Mamie McFaddin Ward Heritage Foundation

AMSET: First Thursdays with Jazz

VIRTUAL GALA



All participants enjoyed our Sensational Sapphire 70th Anniversary Celebration. The live streamed event was held at 7:00 p.m. on Thursday, October 29 and emceed by the illustrious mistress of ceremonies, the incomparable and hilarious, Barbara Quinn. We looked back at our accomplishments and forward to our bright future. As participants tuned in via zoom, they heard from some of our beloved artists such as John Alexander, Ines Alvidres, David Cargill, Keith Carter, David McGee and Prince Thomas as well as some of our favorite patrons

young and old alike such as Heather Petkovsek, Brad and Pat Klein and Ashton, Carlisle and little Vivian Ohmstede. Board members Gerald Farha, Albert Nolen, Sandra Clark and staff members also joined in with cameo appearances.

AMSET also teamed up with one of Beaumont's favorite caterers, Katharine and Company, to offer viewers a delicious and delightful to-go dinner. Those who ordered two or more dinners were also treated to a bottle of wine by AMSET. In case you missed the evening

festivities, several of the videos will be uploaded soon to the museum's website at www.amset.org.



FREE FAMILY Arts DAY

Family Arts Days are one of AMSET’s most popular events. Since August 2020, AMSET has transformed Family Arts Days into Drive-Thru experiences where bags filled with activities are handed out to families in their vehicles. Video instructions to complete hands-on art activities are available on the AMSET website and social media platforms. For maximum participant involvement, AMSET partners with other organizations,

such as the Beaumont Fire Museum, Beaumont Public Library, Texas Energy Museum, United Methodist Church Beaumont, McFaddin-Ward House Historic Museum and Bill Clark Pest Control. Just like AMSET’s usual Family Arts Days, hands-on art activities focus on the many cultures of our region, holidays and the current exhibits. Join in on the fun and drive on thru on Saturday, February 20, 2021 when we will

celebrate Black History Month, Mardi Gras and draw inspiration from the artwork of the current exhibitions, *From the Vault: Tyler Museum of Art and Perspectives: Recent Acquisitions and Selections from the Permanent Collection.*

For more information:
www.amset.org or
www.facebook.com/amsetx

Holiday Tree Lighting

It’s almost time to get your family’s Santa hats and holiday sweaters ready, because the 2020 Holiday Season will begin Thursday, December 3rd. The Art Museum of Southeast Texas is busy working with all of the other Holiday Tree Lighting partners to bring your family a safe and festive Holiday experience. The Holiday Tree Lighting team kicks off the season by decorating and lighting the downtown museum district’s tree annually. For up to date details on the Holiday Tree Lighting, visit amset.org or follow AMSET on social media.



Gingerbread House WORKSHOP

Circle the date! Clear your calendar! Call your friends! AMSET invites you to join us for our Annual Holiday Gingerbread House Workshop. Make plans to join us from 10 a.m. to 12:30 p.m. on Saturday, December 5th, to create your very own gingerbread house to add to your home’s holiday atmosphere. Sign up early! Participation is limited to a smaller than normal group to fully allow for safe distancing. Masks and other Covid19 precautions will be strictly enforced. Participation by Zoom is an option. Call for details.

COST:
Members: \$40 for one house, \$60 for 2 houses
Non-Members: \$50 for one house, \$70 for 2 houses
 (Maximum two people per house)

Registration is open now!
 Call (409) 832-3432 for more information or to register.

Art Museum of Southeast Texas (AMSET)

2019 - 2020 Contributors of \$250+

Corporate/Individual Sponsor \$10,000+

B.A. & E.W. Steinhagen Benevolent Trust
C. Homer & Edith Fuller Chambers
Charitable Foundation
City of Beaumont (In-Kind)
Ms. Sandra Clark
Mr. & Mr. Rob Clark & Jerry Thacker
(Includes In-Kind)
The Crenshaw Family Foundation
Edaren Foundation
Mrs. Barbara & Mr. Michael Gamson
(In-Kind)

Goodyear-Beaumont Chemical
(Includes In-Kind)
Helen Caldwell Locke and Curtis Blakey
Locke Charitable Foundation
Mr. James Kralik (In-Kind)
Ms. Deborah Luster (In-Kind)
Mamie McFaddin Ward Foundation- Pledge
National Endowment for the Arts
Mrs. Barbara & Mr. Robert G. Quinn
Texas Commission on the Arts
Mr. Prince Thomas (In-Kind)

Wesley W. Washburn, M.D. and Lulu L.
Smith, M.D. Endowment Fund
Wilton P. & Effie Mae Hebert Foundation
The James & Sue Mann Foundation
The Union Pacific Foundation
Mr. Clint Willour (In-Kind)
Mr. Wallace Wilson (In-Kind)
Mr. Geoff Winningham (In-Kind)

Corporate/Individual Sponsor \$5,000+

Anonymous
Capital One Bank
Mrs. Carolyn & Mr. Mark Fertitta
Mrs. Lee Ann & Mr. Terry Garth

H.E. & Kate Dishman Foundation/Hancock
Whitney
H-E-B Tournament of Champions
Jefferson County

Mrs. Heather & Mr. Mark Petkovsek
TOTAL: Port Arthur Refinery
Ms. Regina Rogers

Corporate/Individual Sponsor \$2,500+

Bando's Catering/Debbie Bando
Mrs. Elizabeth Boyt
Mrs. Lisa & Mr. Brent Coon (Includes In-Kind)
Daniels Construction
Foundation for Southeast Texas

Mrs. Linda & Dr. Charles Foutz
Mrs. Kellie & Dr. John Fowler
Mr. Jules Buck Jones (In-Kind)
Mrs. Patricia Klein
Market Basket Food Stores

Ms. Emily Peacock (In-Kind)
Mrs. Sheila & Mr. Jerry Reese
Simpson Omohundro Foundation

Sponsors/President's Club \$1,000+

Mrs. Carla & Mr. Josh Allen
Ms. Bobbie Applegate & Mr. Joe Pizzo
Dr. Beth & Mr. Brian Bommer
Mrs. Colleen Burns
Mr. Jerome Cabeen (Includes In-Kind)
Mr. Keith Carter
Mr. & Mrs. Will Crenshaw, Sr.
The Honorable Marcia & Mr. Seth Crone
Mrs. Sandra & Mr. Joseph Fertitta
Mrs. Katherine & Mr. W.E. Fouts (In-Kind)
Mrs. Karen & Mr. Michael Fuljenz
(Includes In-Kind)

Mrs. Natalie & Mr. S.L. Greenberg
Mrs. Roxanne & Mr. Eric Hellberg
Mrs. Kathé & Mr. Jim Hendricks
Mrs. Jane & Mr. Joe Bob Kinsel
(Includes In-Kind)
Mrs. Keely & Mr. Craig Kinsel
Kinsel Motors (Includes In-Kind)
Dr. Mark Kubala
Mrs. Gloria & Mr. Charles Locke
Mrs. Lori & Mr. Michael Lockwood
Mr. Gilbert Lowe
Mrs. Becky & Mr. Chuck Mason, Jr.

Mrs. Nell & Dr. W. T. Morris
Mrs. Anya & Mr. J. Pat Parsons, Jr.
Mrs. Melody & Mr. J. Pat Parsons
Mr. Stanley K. Price
Mr. William "Kip" Price
Mrs. Michele & Mr. J. Mitchell Smith
Mrs. Jenny & Judge Mickey Shuffield
Mrs. Kim & Mr. Roy Steinhagen
The Late Mr. Richard Stout
Mrs. Elizabeth & Mr. Russ Waddill
Ms. Regina Winegar

Corporate Sponsors \$1,000+

Architectural Alliance
American Valve & Hydrant
BNI All Stars

The late Mrs. Marcia Giglio
Giglio Distributing Company/Charles Giglio
(In-Kind)

Lamar University Foundation/ Derina
Holtzhausen, PhD

Corporate/Patron \$500+

Mrs. Nicole & Mr. Mike Albanese
Mrs. Janet Allred
Mr. Dexter Augier
Mr. Christopher Bean
Classic Cadillac/Anthony Toups
Coastal Welding Supply/ Mr. Chuck Mazoch
Cook Parker, PLLC
Mrs. Susan & Dr. Mike Cormier
Mrs. Tootsie Crutchfield
Mrs. Linda & Mr. Joseph Domino
Ms. Erin Dorn
Mr. Gerald Farha (In-Kind)
Mrs. Charlotte & Mr. Jimmy Fontenot
(Includes In-Kind)

Ms. Jessica Garth Whitney
Ms. Martha Gideon
Mrs. Marilyn & Mr. Edward Gripon
Mr. John Hawa
Ms. Carol Hebert/BASF TOTAL Petrochemicals,
L.P.
Ms. Karol Howard & Mr. George Morton
Mrs. Aggie & Dr. Young In
Ms. Dee Kreft
Drs. Rita & Vijay Kusnoor
Mrs. Patti & Mr. Floyd F. McSpadden, Jr.
Mrs. Elizabeth & Dr. John Miller
Mr. Chuck Mazoch
Mr. Pat Miller

Moncla's Inc.
Mr. Albert Nolen
Mrs. Camille & Mr. Chris Ohmstede (In-Kind)
Ms. Kit Ohmstede
Ms. Angelica Paez (In-Kind)
Mrs. Susan & Dr. James Simmons
Mrs. Neri & Dr. Rudy Sotolongo
Mrs. Laura & Mr. Tim Stelly
(ExxonMobil matching)
Mrs. Sheila & Mr. Walter Umphrey
Mrs. Candice & Mr. Brent Walters
Mrs. Kathleen & Mr. Jeff Wilkinson
Mr. Robert Wray

Corporate/Individual Fellow \$250

Alliance Masonry
Ms. Sunni Bishop
Mrs. Paula & Mr. Joey Blazek
Mrs. Chris & Mr. Martin Broussard
Mrs. Reba Bunt
Ms. Sheri Hood- Callahan
Mrs. Margi & Mr. G.R. "Rocky" Chase
Mrs. Betty & the late Dr. Henri Clarke
Mrs. Christina & Mr. Josh Crawford
Mr. Bernie Daleo
Ms. Katrina Davis
Ms. Dornith Doherty
Mrs. Danita & Mr. Doug Fierce

Mrs. Tracey & Mr. James D. Gilliam, II
Mrs. Liliana & Mr. Rene Greenwald
Ms. Martha Sue Jones
Mrs. Tam & Mr. Tom Kiehnhoff
Mrs. Joan & Mr. Michael Kirkpatrick
Ms. Susan Knabeschuh
Mrs. Suzanne & Mr. Don Maloney
Mr. William Maxey
Mrs. Nancy & Mr. Steve McGrade
Ms. Camille Mouton
Mrs. Nancy & Mr. Frank Newton
Mrs. Suzanne & Mr. Christopher Peiler
Mrs. Andrea & Mr. John B. Quigley

Mrs. Ida McFaddin Pyle
Ms. Patricia Barry Rumble
Mrs. Mary & Dr. George C. Scott
Mrs. Marcia & the Honorable John Stevens
Mrs. Lisa & Mr. Timothy Sudela
Ms. Patricia Thorp
Ms. Jo Vance
Mrs. Naomi Maureen Winchell
Ms. Paige Windham
Mrs. Peggy & Mr. Juan Zabala
Mrs. Cathy & Mr. Frank Zummo

UPCOMING EVENTS

From the Vault: Tyler Museum of Art

Perspectives

Café Arts Series for Local Artists –

Brandi Hamilton: No Solid Surface

Gayle Pugh: Diversity of Texas

Winter Family Arts Day Drive-Thru

Holiday Tree Lighting

Gingerbread House Workshop

First Thursday (tentative)

First Thursday (tentative)

Spring Exhibition, Delita Martin

Winter Book Club

On view October 3, 2020 - February 28, 2021

On view October 3, 2020 - February 28, 2021

On view till November 15, 2020

Artist Reception November 5, 2020 @ 4:30 p.m.

On view November 19, 2020 - February 14, 2021

Saturday, February 20, 2021 @ 10 a.m.

Thursday, December 3, 2020 @ 5:30 p.m.

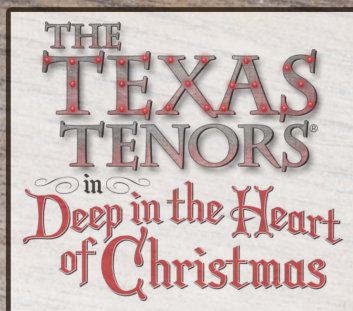
Saturday, December 5, 2020 @ 10 a.m.

Thursday, December 3, 2020 @ 5:30 p.m.

Thursday, January 7, 2021 @ 5:30 p.m.

On view March 13 - May 23, 2021

Tuesday, January 19, 2021 @ 5:30 p.m.



December 6, 2020



SYMPHONY
OF SOUTHEAST TEXAS



Art Museum of Southeast Texas
500 Main Street Beaumont, Texas 77701
(409) 832-3432 www.amset.org
Hours: Mon-Fri 9-4, Sat 11-4, Sun Closed



Follow us @AMSETx