

# Art Museum of Southeast Texas

500 Main

Spring 2023

CURRENT EXHIBITION

## Margaret Smithers-Crump: Kinship

April 1 - June 18, 2023

**W**e invite you to visit the museum April 1 - June 18 to see AMSET's newest exhibition, *Margaret Smithers-Crump: Kinship*. Margaret Smithers-Crump is a Canadian-born mixed media artist currently living in Houston, Texas. Her work addresses the interconnectedness of the Earth's diverse life forms and ecosystems and seeks to encourage discourse that generates new ideas and a deeper understanding about our role and collective responsibilities in an increasingly intertwined biosphere. She creates her artworks with hundreds of units of hand-cut, recycled translucent Plexiglas which she paints, shapes and chemically joins into sculptural forms and installations. The glass-like quality of the semi-transparent Plexiglas emphasizes the fragility of life.

Smithers-Crump has exhibited nationally with recent solo exhibitions at the Grace Museum, Abilene, Texas; Pearl Fincher MFA, Houston, Texas; Galveston Art Center, Galveston, Texas; Imperial Center for the Arts, Rocky Mount, North Carolina; Penn College of Technology - Penn State and Manifest Art Center, Cincinnati, Ohio. Her recent gallery exhibitions were with Camiba Art Gallery, Austin, Texas and Rudolph Blume Fine Art, Houston, Texas. She participated and received a Houston Chronicle review for her large installation at the Silos for the 2019 Sculpture Month, Houston. Margaret holds a BFA in Painting from Miami University, Oxford, Ohio and has lived and traveled extensively.

She grew up on her family's island in Canada, lived in the South Pacific in her early twenties and eventually came to live along the Gulf Coast. She has traveled to many countries including Japan, France, Italy, Spain, Peru, Belgium, Germany, Netherlands, Costa Rica and Switzerland. These experiences expanded her cultural education and nurtured her respect and awe for nature. She maintains that the planet is her best educator.

Margaret Smithers-Crump, *Planktonic Love*, 2022, acrylic on hand-cut recycled translucent Plexiglas, image courtesy of the artist.

This exhibition is generously funded, in part, by the Edaren Foundation, Texas Commission on the Arts, the National Endowment for the Arts, the Wesley W. Washburn, M.D. and Lulu L. Smith, M.D. Endowment Fund, the C. Homer and Edith Fuller Chambers Charitable Foundation, the City of Beaumont, and the members of the Art Museum of Southeast Texas.

Additional funding provided by: Sheila and Jerry Reese, Kim and Roy Steinhagen, and Anonymous.

To find out more about how National Endowment for the Arts grants impact individuals and communities, visit [www.arts.gov](http://www.arts.gov).

MARGARET SMITHERS-CRUMP:  
KINSHIP

April 1 - June 18, 2023

Join us for the opening reception of *Kinship* on Friday, April 14, 2023, from 6:30 to 8:30 pm. Light drinks and refreshments will be served, and a brief gallery talk with the artist will take place at 7:15 pm. The reception is free and open to the public.

**Opening Reception:**

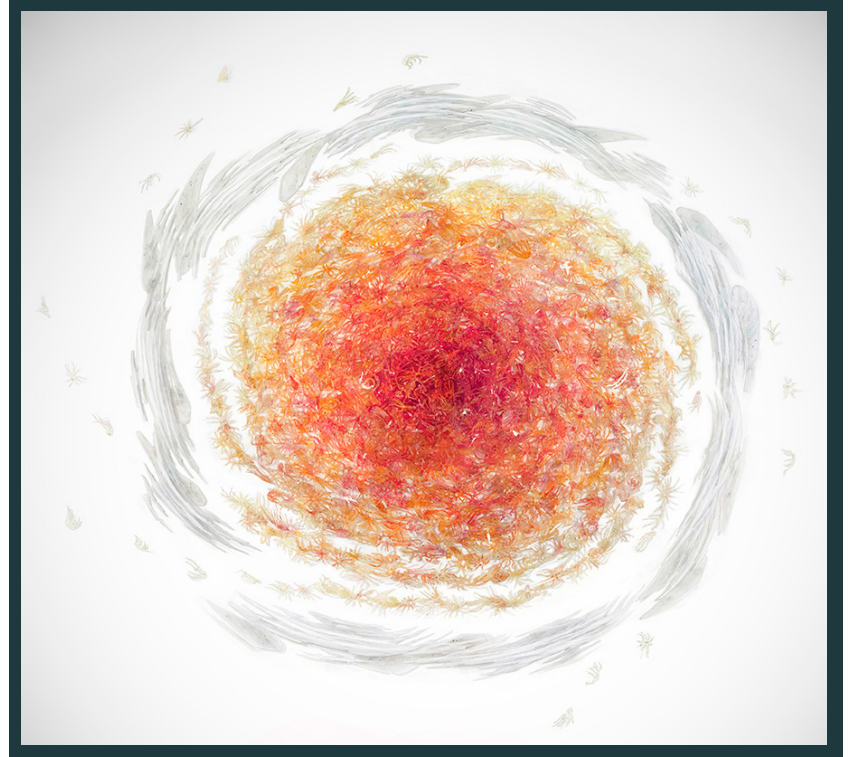
Friday, April 14, 2023  
6:30 - 8:30 p.m.

**Taste of the Arts with  
Dr. Randall Terry:**

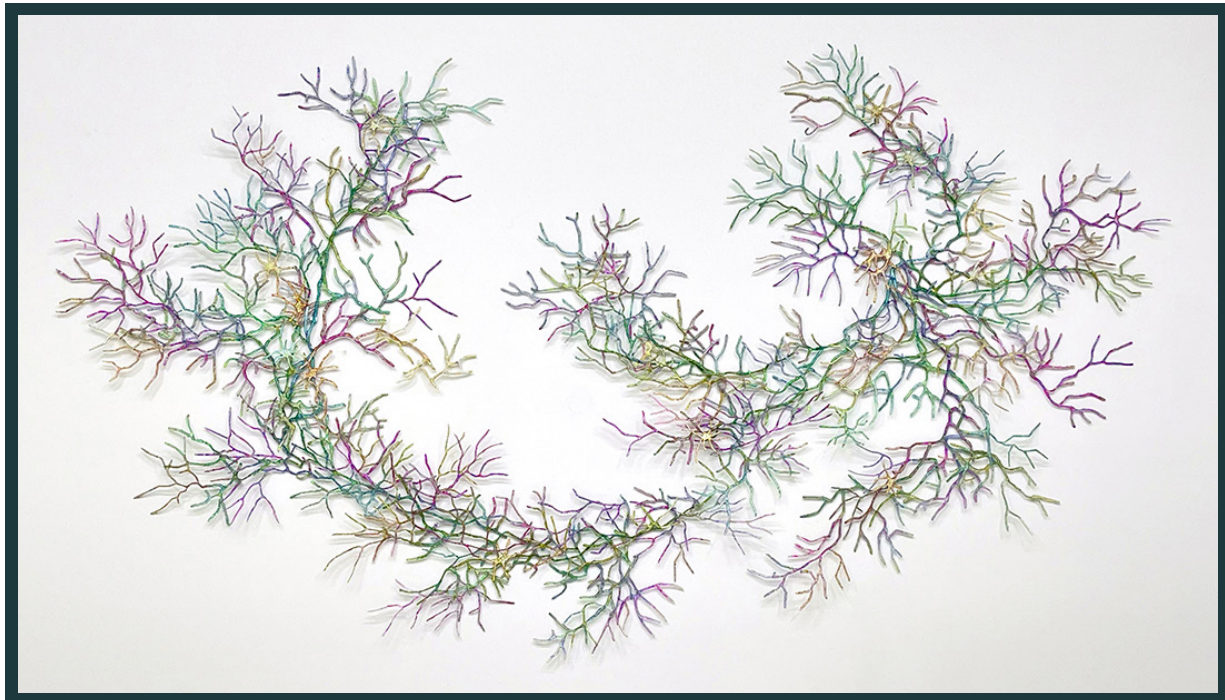
Friday, April 21, 2023  
12:30 - 1:30 p.m.

**Family Arts Day:**

Saturday, May 6, 2023  
10:00 a.m. - 2:00 p.m.



Margaret Smithers-Crump, *Code Blue*, 2016, acrylic on handcut Plexiglas, with fish net, image courtesy of the artist.



Margaret Smithers-Crump, *Arctic Lichenography*, 2022, acrylic on handcut recycled translucent Plexiglas, image courtesy of the artist.

# UPCOMING EXHIBITIONS

## SUMMER DAYS: SELECTIONS FROM THE PERMANENT COLLECTION

July 1 - September 10, 2023

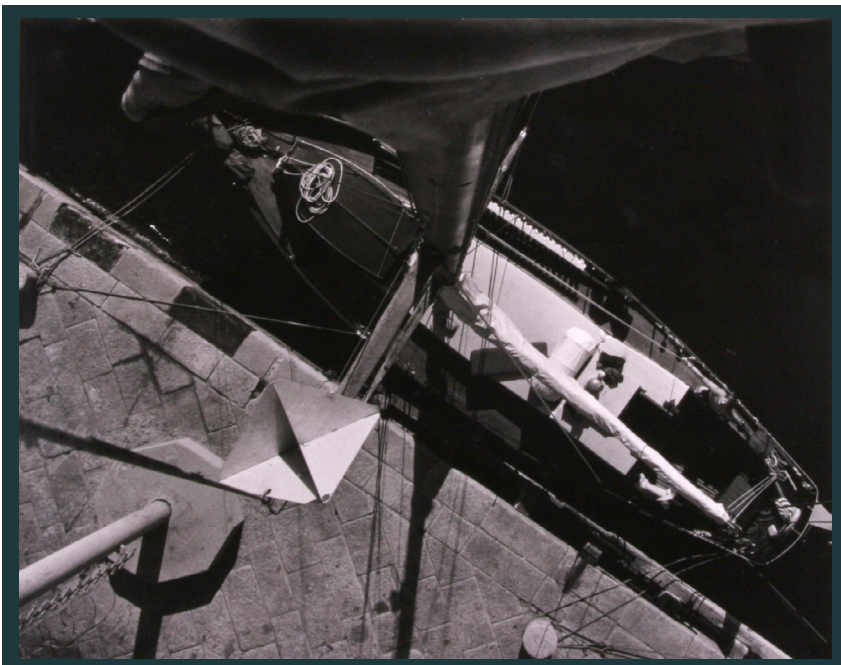
After re-scheduling many exhibitions due to Covid, AMSET is eager to return to its annual summer tradition of exhibiting works from the permanent collection. *Summer Days: Selections from the Permanent Collection* will include works solely selected from AMSET's permanent collection of over 1,700 objects. The show will comprise of paintings, drawings, sculptures, and folk art depicting how people partake in summertime activities such as visiting parks, conversing with neighbors, sunbathing, and going to the beach. It will also include the display of several Mexican toys from the John Gaston Fairey Collection of Mexican Folk Art. An interactive display will demonstrate how these toys are used.



Charles Bell, *Little Italy*, 1979, silkscreen, Gift of Mr. and Mrs. H.F. Byrd, PC 1980.03.b.

## CONVERSATIONS AND CONNECTIONS

July 1 - September 10, 2023



Maurine Howard, *Untitled*, 1975, digital photograph, museum purchase, PC 1975.08.

*Conversations and Connections* will consist of unique pairings of artworks from the permanent collection and will be on display alongside *Summer Days: Selections from the Permanent Collection*. Pairings will emphasize similarities and differences in subject matter, elements of art or overall form, allowing visitors to draw connections between artworks. Well-known artists such as James Surls, John Alexander, and Rachel Hecker will be paired with regional and folk art artists such as Charles Stagg, Maudee Carron and Reverend JL Hunter. The exhibition will include recent acquisitions, works beloved by the community, and works drawn from collections storage that have not been viewed in several decades.

Summer Days: Selections from the Permanent Collection and Conversations and Connections are generously funded, in part, by the Texas Commission on the Arts, the National Endowment for the Arts, the Wesley W. Washburn, M.D. and Lulu L. Smith, M.D. Endowment Fund, the C. Homer and Edith Fuller Chambers Charitable Foundation, Anonymous, the City of Beaumont, and the members of the Art Museum of Southeast Texas.

ANDY COUGHLAN:  
A CRACK IN THE WORLD

February 9 - May 7, 2023

The current Café Arts Series for Local Artists features the debut of a new series of works by Andy Coughlan. Andy is originally from Brighton, on the south coast of England, but moved to the Southeast Texas area when he married. He has a master's degree in English and also attended art college in England. Andy keeps busy as the Director of Student Publications at Lamar University Press, President of the Press Club of Southeast Texas, and making his own artwork. He has contributed to the Beaumont Enterprise's arts features section for over 20 years and is constantly reading and writing about art, attending museums, and visiting galleries.

This new series has been in progress for several years, but Andy began working in earnest on it during the pandemic. The compositions draw inspiration from walking down public roads. Andy typically paints using acrylic, but also enjoys drawing. He loves lines and abstraction and would gladly spend the rest of his life with a pencil, brush and black ink in hand. Andy believes art should "first and foremost, be visually appealing" and hopes that viewers see something new and beautiful in his compositions each time they view a piece. He specifically works in several layers of paint to not only create visual depth, but to also "encompass the layers of history, much of which we will never know, that led us to where and who we are [now]". He is excited to debut this new series to the Southeast Texas community.



Andy Coughlan, *A Crack in the World*, n.d., acrylic on canvas, image courtesy of the artist

BEAUMONT CAMERA CLUB:  
JURIED GROUP EXHIBITION

May 11 - August 13, 2023

In February 2021, the Café Arts for Local Artists Series presented its first juried group exhibition in collaboration with the Beaumont Camera Club (BCC). The exhibition included over 20 photographs that were selected from BCC active members by a committee of Camera Club officers. Dennis Kiel, Director of the Dishman Art Museum at Lamar University, selected first, second, and third place prize winners from the group exhibition. Lyne Raff won first place for her photograph, *Cicada* and was awarded a fully funded solo exhibition in the café in February 2022. Raff's exhibition was featured on the television program, *Texas Monthly Reporter*.

This May, AMSET will partner with BCC once again to present another juried group exhibition. The museum would like to thank Rob Clark and Jerry Thacker for graciously underwriting Lyne Raff's exhibition in 2022 and for the future best of show winner's exhibition in May 2024.

The BCC meets at 7:00 P.M. the first and third Mondays of each month at the Beaumont Botanical Gardens (6088 Babe Zaharias Dr., Beaumont, TX 77705). Visitors are always welcome and more information can be found at [www.beaumontcameraclub.com](http://www.beaumontcameraclub.com).



Lyne Raff, *Cicada*, 2019, digital print on metal, image courtesy of the artist

AMSET proudly announces that the Acquisitions Committee and Board of Trustees have approved the acquisition of several artworks into the museum's permanent collection.

The ceramic work *Bottle Form* by James Watkins was purchased by the museum during the artist's exhibition at AMSET this past winter. The beautiful iridescent gold vessel was on display in the main galleries by the title wall, and it was enjoyed by many visitors. It is a remarkable example of James Watkins' style, which has developed over the course of his outstanding career. It was also featured on the cover of *Sculpture Monthly*.



James Watkins, *Bottle Form*, 2021, wheel-thrown and altered stoneware with fumed gold luster and etched with a glass etching solution.



Shields Landon "S.L." Jones, *Untitled (Men Feeding Chickens)*, n.d., mixed media on paper.

A mixed media work on paper by artist Shields Landon "S.L." Jones was kindly donated by local collector Stephanie Brisendine. *Untitled (Men Feeding Chickens)* is a piece that encapsulates the folk artist's whimsical style. It will join two other works by "S.L." Jones currently in the museum's collection.

The Ohmstede Company has made a generous donation of The Ohmstede Company's 70th Anniversary Door, a large bronze door by local artist David Cargill. It has been used as their front door for many years. The low relief surface of the door includes abstract as well as representational elements that combine into a beautiful composition. David Cargill has been an integral part of the Beaumont art community for many years, and his work was exhibited at AMSET in 2022. The museum plans to install the door on site so it can be enjoyed by our visitors.

These acquisitions will further the museum's mission by expanding its permanent collection. AMSET is grateful for the generosity of our community, and we look forward to sharing these works with the public.



David Cargill, *The Ohmstede Company 70th Anniversary Door*, 1975, cast bronze.

GO FOR THE GOLD  
BRING ON THE BLING!

The Art Museum of Southeast Texas hosted Bring on the Bling!, its annual themed **Go for the Gold** party and reverse drawing fundraiser on Thursday, March 2, 2023 at 6:30 p.m. at the museum. Chaired by Kathé Hendricks and Brandon Williams and emceed by Channel 12 news anchor, Jordan Williams, this year's **Go for the Gold** \$100 tickets included dinner for two, catered by Two Magnolias and featured silver dollar ham biscuits, a bejeweled salad, 24 Karat corn pudding and 1,000,000 dollar bars for dessert. The open bar featured the "Golden Limoncello Bling Thing" as its signature drink. Most importantly, the ticket granted an entry into the drawing to win \$10,000 in gold coins! The \$10,000 first-place prize was won by Becky and Bill Yoes, second prize, \$1,500 in gold coins, was won by Debra Orta and third prize, \$1,000 in gold coins, was won by Keely Kinsel. Ten silver coins and several bottles of champagne were also given as prizes throughout the drawing. Albert Nolen was the top ticket seller, selling over 60 tickets! Kathé Hendricks sold the winning ticket which entitled her to a free ticket to next year's drawing.



(L-R) GFTG Co-Chairs Kathé Hendricks and Brandon Williams

Special thanks to all the wonderful people who sold **Go for the Gold** tickets, bought tickets, donated items for the raffle baskets and sold raffle tickets the night of the event. All proceeds support exhibition and education programming at AMSET. Year after year, **Go for the Gold** continues to be a very successful fundraiser for AMSET. Our community support is amazing! We hope to see you all back next year, buying, selling and winning!



(L-R) Julie and Mary Clarie Strassburger



(L-R) GFTG emcee Jordan Williams and Rachel Grove

The Collectors Club went on a very special trip to Houston on Thursday, February 9, to tour the art collection of Houston's George Bush Intercontinental Airport and visit the home and studio of Orna Feinstein. Twenty-three Collectors Club members loaded up in 3 vans with the first stop at Houston's Bush Airport, Terminal A. The tour of the airport was led by Alton Dulaney, curator of the Houston Airport System which includes Bush and Hobby Airports. He whisked the Collector's Club members from terminal to terminal showing them the highlights of the collection, including artwork by many artists also represented by AMSET with Beaumont connections such as: Lamar professors Kurt Dyrhaug and Prince Thomas and the late Richard Stout. Alton also highlighted site-specific installations including suspended sculptures and LED sculptures. The Houston Airport System is touted with having one of the best airport collections in the world and one of the best public art collections in Texas.



Houston Airport System Curator Alton Dulaney talking with Collector's Club members.

From the airport, Collectors Club members headed to the lovely home of artist Orna Feinstein. Orna treated everyone to an amazing lunch as well as a tour of her home and upstairs studio. Members then visited her off-site studio where she had a number of amazing works of art in progress. Due to space constrictions, the group was split in two during this stop. Half went next door to the Houston Pecan Company for great shopping while the other half visited the studio, then switched spots. Aside from arriving home two hours late, everyone had a magnificent time.

The next Collectors Club event will take place at AMSET this summer and will be the beloved Collectors Club Show and Tell. Think of it as the SETX version of Antiques Road Show only without the appraisal. Consider what fine piece of art, family heirloom or garage sale curiosity you'd like to share with your fellow Collectors Club members. As always, light appetizers and Collectors Club signature drink will be served as well as lots of laughs, discoveries, and comradery.



Artist Orna Feinstein hosted Collectors Club members in her home for lunch and a tour of her studio.

Contact Lynn Castle or Caitlin Clay for more information on joining the Collector's Club.  
Call (409) 832-3432 or visit [amset.org](http://amset.org).

## 2023 PROTÉGÉ COMPETITION &amp; EXHIBITION

In its 37th year, the Protégé Competition and Exhibition was created specifically to encourage graduating high school seniors to begin taking the steps necessary to become active in the art world.

This year's Protégé juror was Keliy Anderson-Staley, a 2022 Guggenheim Fellow, a 2008 New York Foundation for the Arts Fellow and a 2013 George and Eliza Gardner Howard Foundation Fellow. Collections holding her work include the Library of Congress, Cedar Rapids Museum of Art, Houston Airport System, Museum of Fine Arts Houston and Portland Museum of Art. Her work has been exhibited widely, including Akron Art Museum, Bronx Museum of the Arts, Smithsonian National Portrait Gallery, Southeast Museum of Photography, Shelburne Museum, Ogden Museum of Southern Art, and Morris Museum of Art. *On a Wet Bough*, a monograph of her tintype portraits was published by Waltz Books in 2014. *Documents & Dwellings*, a catalog for her solo exhibition at the Art Museum of Southeast Texas was published in 2022. She holds a BA from Hampshire College and an MFA from Hunter College. She is an Associate Professor of Photography and Digital Media at the School of Art, University of Houston.



Protégé Reception in the Conn Take pART Gallery

On Tuesday, March 7th, teachers, friends and family joined the Art Museum of Southeast Texas staff for the Opening Reception of the 37th Annual Protégé Competition & Exhibition. If you missed the opening reception and awards ceremony, it can be found on AMSET's Facebook page.



Protégé Workshop #1 in the AMSET classroom

The 2023 Protégé Competition and Exhibition was open to 12 counties. This year AMSET had 61 entries from 12 schools; Anderson-Staley selected 20 works for exhibition. In partnership with Lamar University Friends of the Arts, AMSET was able to offer the first, second and third prize winner's scholarships to committed Lamar University art majors. Thanks to a generous bequest by Stewart M. Chisum and Bessie Fisher Chisum, AMSET will be offering an additional \$2,500 college scholarship to the first place winner.

This program is sponsored in part by Market Basket who has been the presenting sponsor since its inception. Additional funding is provided by the C. Homer and Edith Fuller Chambers Charitable Foundation, Wesley W. Washburn, M.D. and Lulu L. Smith, M.D. Endowment Fund, Blick Art Materials, the City of Beaumont, Texas Commission on the Arts, the Stewart M. Chisum and Bessie Fisher Chisum Scholarship Fund and the Department of Art of Lamar University through a donation by The Friends of the Arts.

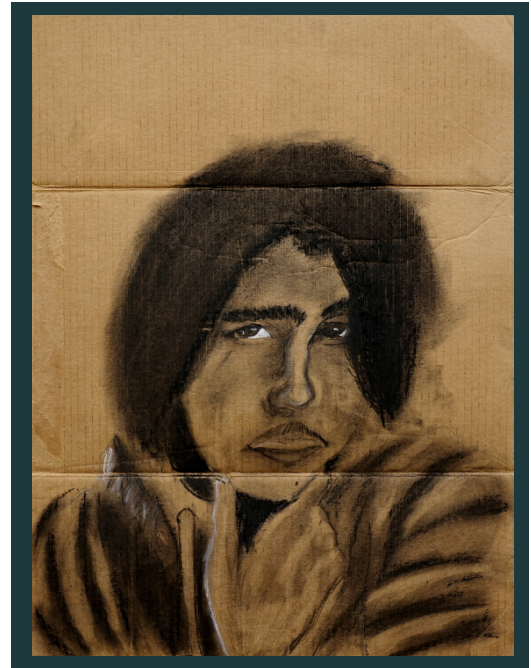


2023 PROTÉGÉ WINNERS & SELECTED ARTISTS

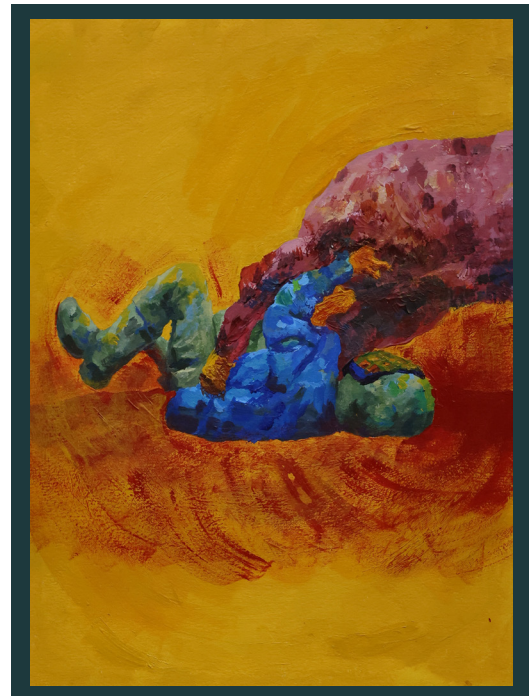
- 1st Place – Reagan Bradfield (Barbers-Hill High School)
- 2nd Place – Logan Walker (Silsbee High School)
- 3rd Place – Ashli Perry (Lumberton High School)
- Honorable Mention – J'Dynne Illa (Port Neches-Groves High School)
- Honorable Mention – Sierra Simien (Bridge City High School)
- Honorable Mention – Isabel Bares (Nederland High School)



Reagan Bradfield, *The Artist*, acrylic on panel, Barbers-Hill High School



Logan Walker, *Charcoals*, charcoal on cardboard, Silsbee High School



Ashli Perry, *Mutton Buster*, acrylic on paper, Lumberton High School

- Elise Bourg (Nederland High School)
- Vinh Bui (Port Neches-Groves High School)
- Leslie Carranza Collazo (Bridge City High School)
- Taylor Croft (Port Neches-Groves High School)
- Alessandra Deleon (Nederland High School)
- Alexis Dickerson (Bridge City High School)
- Autumn Fuller (Port Neches-Groves High School)
- Marizanna Hernandez (Port Neches-Groves High School)
- Andy Ingham (Nederland High School)
- Allison McHugh (Port Neches-Groves High School)
- Pacie Mires (Bridge City High School)
- Aubreigh Moses (Lumberton High School)
- Sammie Schilling (Lumberton High School)
- Alexia Willingham (Bridge City High School)

Kristen Elliot

(Barbers-Hill High School, Art Teacher of the First Place Winner)

## 2023 SUMMER ARTVENTURES

Come and join us for *Summer ArtVentures 2023*! This year's line-up of week-long, half-day workshops, from June 5 through July 21, is more exciting than ever, with textile arts, mixed media, kinetic art, clay and much more. *Summer ArtVentures* is offered Monday through Friday with two workshops per day: morning classes are from 9 a.m. to noon; afternoons are 1:00 p.m. to 4:00 p.m. One week, an all day workshop is offered for TeenVentures from 9:00 a.m. - 4:00 p.m. Children ages 5-14 choose from many class options for a high quality, intensive art education experience. All courses are taught by artists and art professionals, and the participants work closely with these respected artists in a variety of mediums.

*Campers are divided into three age groups, with each course designed for age-appropriate art activities:*

• **Young ArtVenturers**

Children ages 5-7

will have the opportunity to sample clay, paint and mixed media through simplified projects formatted for their age group. These classes will be augmented with art-related story times and outdoor activities.



Children attend ArtVentures Camp.



Children attend Young ArtVentures Camp.

• **ArtVenturers**

Children ages 8-11

have many exciting courses to choose from including clay, textiles, mixed media, printmaking and even kinetic art.



Teens attend Teen Week ArtVentures Camp.

• **TeenVentures in Art**

Teens ages 12-14

Keep active and engaged in making art – a valuable life skill. TeenVentures in Art is a special week, July 18-July 21, just for teens interested in exploring more advanced artmaking practices. This year's instructor, Yolanda Perez will be teaching teens Textile Art. In this week-long course, campers will create innovative fiber and textile art by pushing the boundaries of ancient artisan traditional methods. Teens will explore unconventional methods to fully encourage artistic expression. Projects will include a mix of modern and traditional techniques for surface design, embroidery, sewing, silk painting and sculptural basketry.

The cost for Summer ArtVentures is \$80 for each child and/or each class. Non-members will purchase a one-year family membership that will cost \$60 in addition to classes. Scholarships are also available. You can register online at <https://amseteducation-summerartventures.weebly.com/online-registration-info.html>.

# Art Museum of Southeast Texas (AMSET)

## 2022 - 2023 Contributors of \$250+

### Corporate/Individual Sponsor \$10,000+

|   |   |  |
|---|---|--|
| Anonymous Donor   | Mrs. Joy & Mr. Will Crenshaw, Sr.                                     | Institute for Museum of Library Services |
| BA and Elinor Steinhagen Benevolent Trust                   | Edaren Foundation   | National Endowment for the Arts          |
| Brain & Spine Center of SETX                                | ExxonMobil Corporation/Ms. Nakisha Burns                              | Mrs. Barbara & Mr. Robert G. Quinn       |
| C. Homer & Edith Fuller Chambers<br>Charitable Foundation   | Humanities Texas  | Ms. Regina Rogers                        |
| City of Beaumont  | Helen Caldwell Locke and Curtis Blakey<br>Locke Charitable Foundation | Mrs. Michele & Mr. J. Mitchell Smith     |
| The Estate of Stewart M. Chisum and<br>Bessie Fisher Chisum | Mamie McFaddin-Ward Foundation  | Texas Commission on the Arts             |
| Mr. & Mr. Rob Clark & Jerry Thacker<br>(Includes In-Kind)   | Morgan Charitable Foundation/<br>Mrs. Teri & Mr. Glen Morgan          | Wilton P. & Effie Mae Hebert Foundation  |
|   |   | The James & Sue Mann Foundation          |

### Corporate/Individual Sponsor \$5,000+

|  |                                |                               |
|--|--------------------------------|-------------------------------|
| Community Bank                         | Mrs. Lee Ann & Mr. Terry Garth | Mrs. Sheila & Mr. Jerry Reese |
| Mrs. Orna Feinstein (Includes In-Kind) | Jefferson County               | TotalEnergies                 |
|  | Ms. Heather Petkovsek & Sons   |                               |

### Corporate/Individual Sponsor \$2,500+

|   |   |   |
|---|---|---|
| Mr. David Cargill (In-Kind)                 | Mr. Ron James (In-Kind)                           | Lindsay, Lindsay, & Parsons Law Firm                            |
| Mrs. Lisa & Mr. Brent Coon                  | J.S. Edwards & Sherlock                           | Mrs. Christy & Mr. Mike Persia                                  |
| Ms. Katrina Davis                           | Ms. Shayne King (Includes In-Kind)                | Mrs. Susan & Mr. Jordan Reese, IV                               |
| Mrs. Kristin & Mr. Christopher R. Davis     | Lamar University/Ms. Amy Troha                    | Mr. Mark Sparks   |
| Estate of Elizabeth Anne Adkisson (In-Kind) | Lamar University Foundation/<br>Dr. Golden Wright | Simpson Omohundro Foundation                                    |
| Mr. Charles Ferguson                        | Mr. Lance Letscher (In-Kind)                      | Mrs. Kim & Mr. Roy Steinhagen                                   |
| Hancock Whitney Bank                        | Market Basket Food Stores                         | Texas Coffee Company/ Mr. Joseph Fertitta                       |
| Billy Hassell (In-Kind)                     | Memorial MRI & Diagnostic, PLLC                   | Mrs. Sheila & The Late Mr. Walter Umphrey<br>(Includes In-Kind) |
| HEB Tournament of Champions                 | Mrs. Anya & Mr. J. Pat Parsons, Jr.               |   |
| Mrs. Kathé & Mr. Jim Hendricks              |   |   |

### Sponsors/President's Club \$1,000+

|  |   |   |
|--|---|---|
| Anonymous Donor  | Mrs. Linda & Mr. Joseph Domino                              | Dr. Mark Kubala                                     |
| Mrs. Carla & Mr. Josh Allen  | Mr. Gerald Farha  | Lance Letscher (In-Kind)                            |
| Mr. John Alexander (Includes In-Kind)                              | Mrs. Jennifer & Mr. Thad Felton                             | Mrs. Gloria & Mr. Charles Locke                     |
| Ms. Karen Fabre Babineaux  | Mrs. Stephanie & Mr. Eric Flatten                           | Mr. Gilbert Low                                     |
| Mr. Christopher Bean   | Ms. Kelly & Dr. John Fowler                                 | Mrs. Suzanne & Mr. Don Maloney                      |
| Ms. Robin Broussard & Mr. Robert L. Johnson                        | Mrs. Karen & Mr. Michael Fuljenz<br>(Includes In-Kind)      | Mrs. Patti & Mr. Floyd F. McSpadden, Jr.            |
| Mrs. Colleen Burns   | Mrs. Natalie & Mr. S.L. Greenberg                           | Mrs. Betsy & Mr. Thomas Nelson                      |
| Mr. Keith Carter (Includes In-Kind)                                | Mrs. Cathy & Mr. John Hawa                                  | Mrs. Camille & Mr. Chris Ohmstede<br>(UBS matching) |
| Mrs. Margi & Mr. G.R. "Rocky" Chase                                | Mrs. Catherine & Mr. Gordon Holtzclaw<br>(Includes In-Kind) | Mrs. Janey & Mr. Mike Phelan                        |
| Ms. Sandra Clark   | Mrs. Jane & Mr. Joe Bob Kinsel<br>(Includes In-Kind)        | Mrs. Neri & Dr. Rudy Sotolongo                      |
| The Honorable Marcia & W. Seth Crone, Jr.<br>(BNY Mellon matching) | Mrs. Keely & Mr. Craig Kinsel                               | Ms. Regina Winegar                                  |
| Mrs. Tootsie Crutchfield   |   | Mrs. Melanie & Mr. Jeffery York (In-Kind)           |
| Mrs. Stephanie & Mr. Bernie Daleo                                  |   |   |

### Corporate Sponsors \$1,000+

|   |   |   |
|---|---|---|
| American Valve & Hydrant/<br>Mrs. Lisa & Mr. Timothy Sudela | Del Papa Distributing/ Mr. Jeff Wheeler                       | Sarah Foltz Fine Art LLC/ Ms. Sarah Foltz |
| Bill Clark Pest Control (In-Kind)                           | Entergy   | Union Pacific Foundation                  |
| Coastal Welding Supply/ Mr. Chuck Mazoch                    | Giglio Distributing Company/<br>Mrs. Kim & Mr. Charles Giglio | YMBL (Young Men's Business League)        |

### Corporate/Patron \$500+

|  |  |  |
|--|--|--|
| Mrs. Janiece & Mr. Gregory Austin                              | Junior League of Beaumont                              | Mrs. Juanita & Mr. Richard Spinney                   |
| Mrs. Frances & Mr. J. Timothy Arnoult                          | Mrs. Joan G. & Mr. Michael S. Kirkpatrick              | Sam's Package Store/ Mr. David Fertitta<br>(In-Kind) |
| Education First Federal Credit Union/<br>Ms. Laura Landry      | Mrs. Susie & Mr. Jimmy McDermand<br>(Includes In-Kind) | Mrs. Laura & Mr. Tim Stelly<br>(ExxonMobil matching) |
| Mrs. Charlotte & Mr. Jimmy Fontenot<br>(Includes In-Kind)      | Mrs. Nancy & Mr. Steve McGrade                         | UBS (Matching Mr. Chris Ohmstede)                    |
| Foundation of Southeast Texas                                  | McManus Fine Lighting/<br>Mr. Jeff McManus (In-Kind)   | Mrs. Jo Vance  |
| Mrs. Sherry J. & Mr. Thomas Goth                               | Mr. Albert Nolen                                       | Mr. Brian White (In-Kind)                            |
| Mrs. Marilyn & Dr. Edward Gripon                               | Ms. Kit Ohmstede (Includes In-Kind)                    | Dr. Kathleen & Mr. Jeff Wilkinson                    |
| Hebert Health & Wellness Center/<br>Mr. Brandon East (In-Kind) | Mrs. Elizabeth & Mr. Mike Petit                        | Mrs. Paige Windham                                   |
|  | Mrs. Judith & Mr. Roy Shaw                             |  |

## Corporate/Individual Fellow \$250

Mrs. Claire & Mr. Doug Ankenman  
(Includes In-kind)  
Ms. Bobbie Applegate & Dr. Joe Pizzo  
Mr. Dexter Augier  
Ms. Reba Bunt  
Ms. Sheri Hood-Callahan  
Mrs. Betty Clarke  
Mrs. Christina & Mr. Josh Crawford  
Ms. Melanie Dishman  
Mrs. Yvette & Mr. Rolando Estrada  
Mrs. Sandra & Mr. Joseph Fertitta  
Mrs. Danita & Mr. Doug Fierce

For Heaven's Sake/Mrs. Gina Crenshaw  
(In-Kind)  
Mrs. Tracey & Mr. James D. Gilliam, II  
Mrs. Rita & Mr. Paul Hall  
Mrs. Sharon & Mr. Gus Kopriva  
Drs. Rita & Vijay Kusnoor  
Mrs. Tanya & Mr. Michael Lee  
Mrs. Sydney & Mr. Kenneth C. Matthews  
Mrs. Sharon & Mr. Roger McCabe  
Fred Miller's Unique Gifts/  
Mr. Chris Miller (In-Kind)  
Ms. Karol Howard & Mr. George Morton  
Ms. Camille Mouton

Mrs. Nancy & Mr. Frank Newton  
Mrs. Suzanne & Mr. Christopher Peiler  
Mr. Christopher Plaunty & Mr. Clayton Peco  
Mr. Stanley K. Price  
Ms. Gayle Pugh  
Mrs. Andy M. & Mr. John B. Quigley  
Law Offices of Wells, Peyton, Partain,  
Baldo & Lightly  
Ms. Sandra Wagner  
Mr. Brandon & Mr. Jordan Williams  
Zummo Meat Market/  
Mrs. Cathy & Mr. Frank Zummo

### AMSET would like to extend a special Thank You to:

|   |  |   |  |  |  |
|---|--|---|--|--|--|
| <b>Patrick &amp; Kathryn Phelan</b><br>who made a Christmas Memorial donation   | <b>Lisa G. Moses</b><br>who made a donation in Honor of<br><i>Regina Winegar</i>       | <b>Judy &amp; James Black</b><br>who made a donation in Memory of<br><i>Edwin Gerald Cordts</i>   | <b>Kathé &amp; Jim Hendricks</b><br>who made a donation in Honor of<br><i>Charles Locke</i>                  | <b>Martha Sue Jones</b><br>who made a donation in Memory of<br><i>Natalie Greenberg</i>                            | <b>Carol E. Miller</b><br>who made a donation in Memory of<br><i>Natalie Greenberg</i> |
| <b>Regina Rogers</b><br>who made a donation in Memory of<br><i>Julie &amp; Ben Rogers</i>   | <b>Suzanne Maloney</b><br>who made a donation in Memory of<br><i>Natalie Greenberg</i> | <b>Cook Parker &amp; Associates, LLC</b><br>who made a donation in Memory of<br><i>Joseph "Whit" Outlaw</i>   | <b>Janet &amp; Samuel Wine</b><br>who made a donation in Memory of<br><i>Joseph "Whit" &amp; Dana Outlaw</i> | <b>Kaye Luparello</b><br>who made a donation in Memory of<br><i>Natalie Greenberg</i>                              | <b>Reba Bunt</b><br>who made a donation in Memory of<br><i>Natalie Greenberg</i>       |
| <b>Law offices of Wells, Peyton, Partain, Baldo &amp; Lightly</b><br>who made a donation in Memory of<br><i>Natalie Greenberg</i> |  | <b>Paula Lovoi</b><br>who made a donation in Memory of<br><i>Joseph "Whit" Outlaw, Edwin Gerald "Gerry" Cordts, Jr., &amp; Virginia "Ginger" Hebert</i> |  | <b>Kathé &amp; Jim Hendricks</b><br>who made a donation in Memory of<br><i>Natalie Greenberg &amp; Chuck Mason</i> |  |

## UPCOMING EVENTS

### Spring Exhibition

*Margaret Smithers-Crump: Kinship*  
Spring Exhibition Opening Reception  
Taste of the Arts with Dr. Randall Terry

On view April 1 - June 18, 2023  
Friday, April 14, 2023, 6:30 - 8:30 p.m.  
Friday, April 21, 2023, 12:30 - 1:30 p.m.

### Café Arts Series for Local Artists

*Andy Coughlan: A Crack in the World*  
*Beaumont Camera Club Juried Group Exhibition*  
Café Opening Reception

On view February 9 - March 7, 2023  
On view May 11 - August 13, 2023  
Sunday, June 4, 2023, 2:00 - 4:00 p.m.

### Education / Around the Museum

Summer ArtVentures Registration Opens  
Book Club: *For the Minds and Wills of Men* by Jeff Lanier  
Odom Junior Docent Exhibition on view at AMSET  
Spring Family Arts Day (FAD)  
Odom Junior Docents Reception & Awards Ceremony  
Treasure Auction "Pairs" Fundraiser

Friday, March 31, 2023  
Tuesday, April 18, 2023, 5:30 - 7:00 p.m.  
April 21 - May 21, 2023  
Saturday, May 6, 2023, 10:00 a.m. - 2:00 p.m.  
Tuesday, May 16, 2023, 5:30 - 7:00 p.m.  
Thursday, June 8, 2023, 6:30 p.m. - until



Art Museum of Southeast Texas  
500 Main Street Beaumont, Texas 77701  
(409) 832-3432 www.amset.org  
Hours: Mon-Fri 9-5, Sat 10-5, Sun Noon-5



Follow us @AMSETx